

JAMES NEAVE
THE ESTATE AGENTS



129 The Heart Walton-On-Thames Surrey KT12 1GA

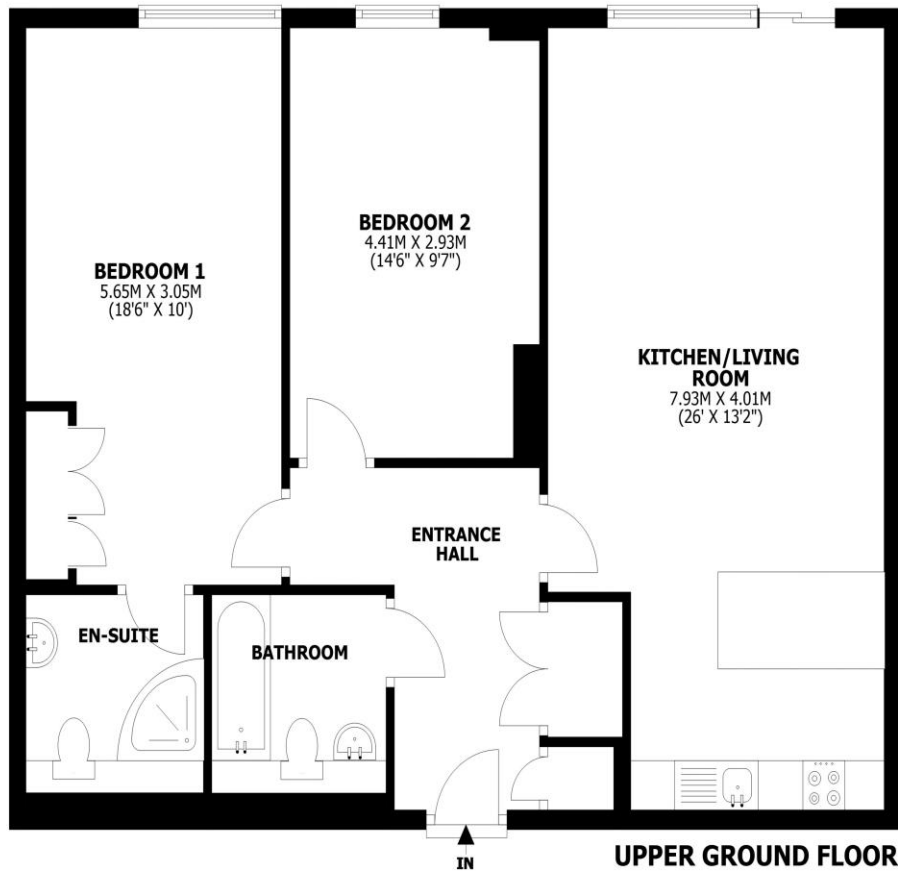
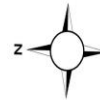
£350,000





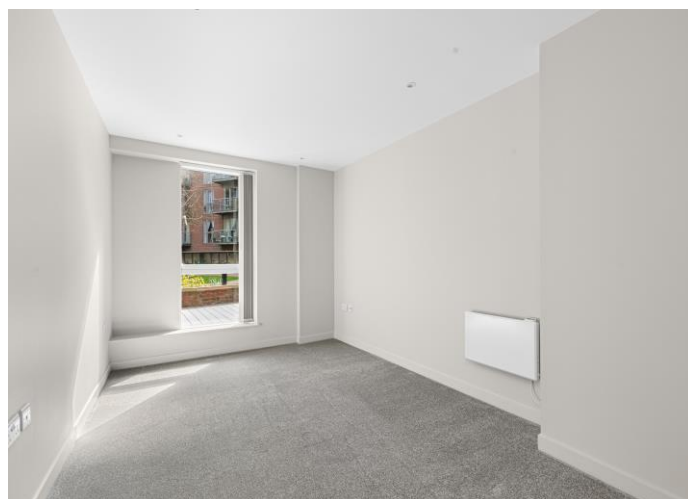
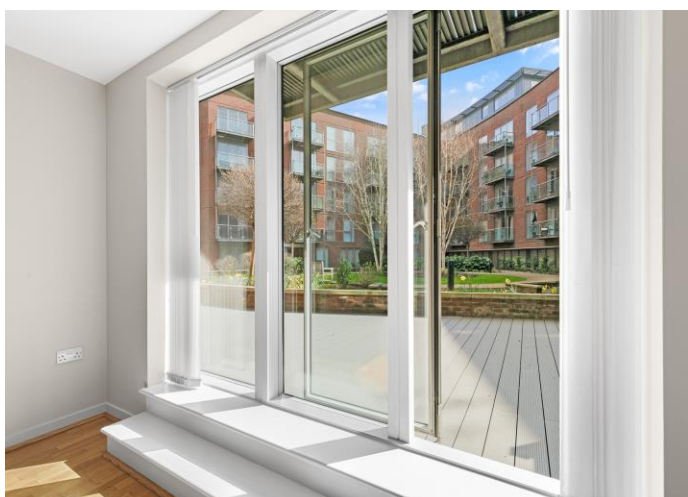
The Heart, Walton-on-Thames, KT12

Total area: approx. 80.4 sq. metres (865.1 sq. feet)



This floorplan is for illustrative guidance only and is not to drawn to scale. Whilst every attempt has been made to ensure accuracy, measurements are approximate and should not be relied upon as a matter of fact. Maximum dimensions are given excluding small alcoves, etc unless otherwise stated.

For sale with no onward chain. a modern two-bedroom apartment set on the ground floor within the popular Heart of Walton development. Benefiting from a sizable garden terrace giving highly desired outdoor space. The apartment has been recently re-decorated and benefits from freshly laid carpets. The living room and kitchen are open-plan, and from the living room there is a sliding door which takes you out on to the garden terrace. Both bedrooms are doubles with the main bedroom having fitted wardrobes and an en-suite shower room. There is a further bathroom with shower over bath, plus a utility and storage cupboard in the hallway. Externally there are well kept communal gardens and underground parking for one car. The development has a concierge service and 24-hour security. Walton Mainline Train Station is approx. 1 mile away and has fast trains to London Waterloo. Being in the centre of town, means you benefit from all the local conveniences, restaurants, and River Thames nearby. Walton town centre as many popular amenities including an M&S Foodhall, Costa Coffee and Every Man cinema. EPC C.



AGENTS NOTES: These details do not constitute any part of an offer or contract. In issuing them we do not have any authority to give any warranty or representation whatsoever in respect of this property. These details are provided without any responsibility on our part or the part of the vendors. No statements in these details are to be relied upon as representations of fact and purchasers should satisfy themselves by inspection or otherwise as to the accuracy of the statements contained therein.

Equipment: We have not tested the equipment or central heating system mentioned in these particulars and purchasers are advised to satisfy themselves as to their working order and condition.

Measurements: Great care is taken when measuring but measurements should not be relied upon for ordering carpets, equipment, etc.